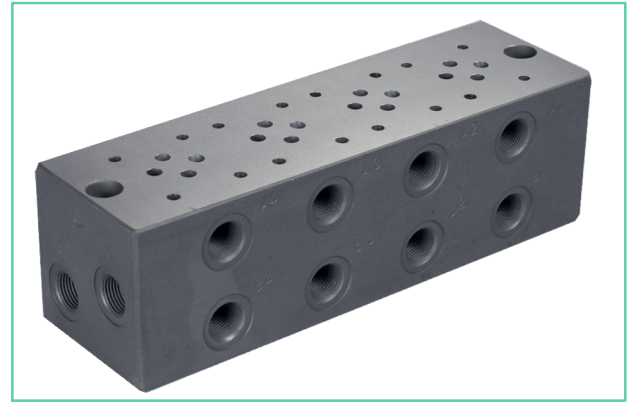


## ■ Base Plates, For 1/8 Modular Valves

### ■ Specifications

Max. Operating Pressure .....250Kgf/cm<sup>2</sup>



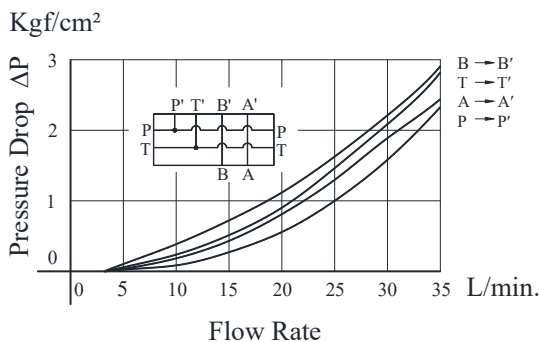
### ■ Model Number Designation

MMC	-01	-6		-40	80
Series Number	Plate Size	Number of Stations		Design Number	Design Standard
MMC: Base Plate	01	1: 1 Station 2: 2 Station 3: 3 Station	4: 4 Station 5: 5 Station 6: 6 Station	40	80

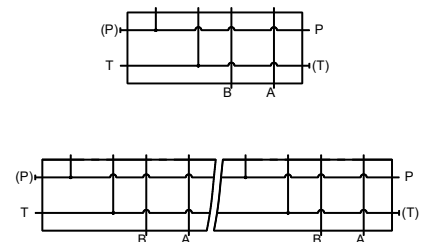
### ■ Typical Performance Characteristics

Hydraulic Fluid: Viscosity 35cSt, Specific Gravity 0.850

#### ● Pressure Drop



#### Graphic Symbols

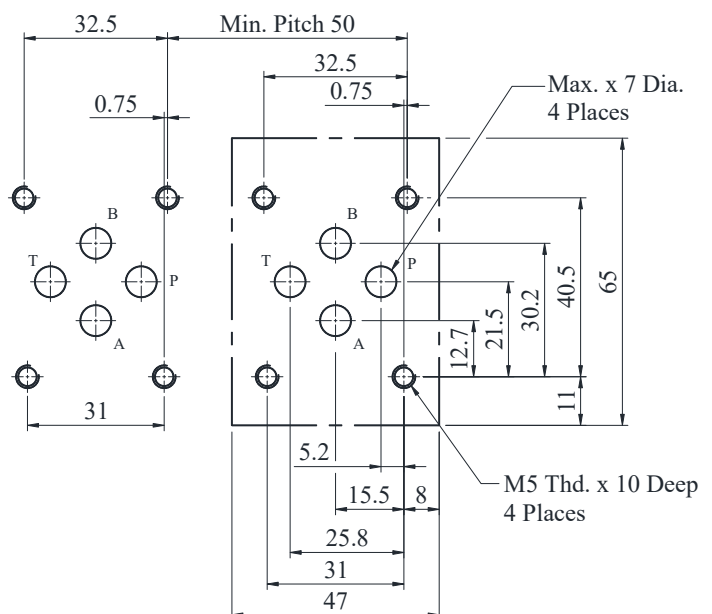


### ■ Instructions

- **Port Used:** Base plate has two **Pressure Port “P”** and two tank port “T”s. Any one of these ports or two ports may be used. However, please be aware that the ports marked with (P) or (T) in the drawing are normally plugged. Remove the plug when using such ports. Make sure that ports that are not currently used are properly plugged.

#### ● Interface Mounting Dimensions for 1/8 Modular Valve

When dedicated base plates (MMC-01) are not used, the following mounting surface must be prepared. The mounting surface should have a good machined finish.



**DIMENSIONS IN  
MILLIMETRES**

DIMENSIONS IN  
MILLIMETRES



**Number Of Station  
(2-6 Stations)**

