

## 1/8 Reducing Modular Valves

### Specifications

Max. Operating Pressure Kgf/cm <sup>2</sup>	Max. Flow L/min.
250	35



### Model Number Designation

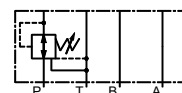
F-	MRP	-01	-B	-30H16
Special Seals **	Series Number	Valve Size	Pres. Adj. Range Kgf/cm <sup>2</sup>	Design Number
<b>F:</b> Special Seals for Phosphate Ester Type Fluids (Omit if not required)	<b>MRP:</b> Reducing Modular Valves for P-Line <b>MRA:</b> Reducing Modular Valves for A-Line <b>MRB:</b> Reducing Modular Valves for B-Line	<b>01</b>	<b>A:</b> 3 ~40 <b>B:</b> * ~70 <sup>*1</sup> <b>C:</b> 35 ~140 <b>H:</b> 70 ~210	<b>30H16</b>

\*1. See the "Minimum Adjustment Pressure" for the item marked \*

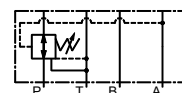
Note : If the setting pressure is less than 19 Kgf/cm<sup>2</sup> maximum flow is limited.  
See the following "Minimum Adjustment Pressure vs. Max. Flow" for serviceable range.

\*\* Before ordering the Special Seals, consult YUKEN INDIA LTD.

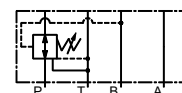
### Graphic Symbol



MRP-01



MRA-01

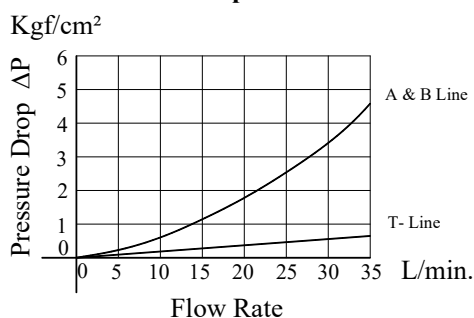


MRB-01

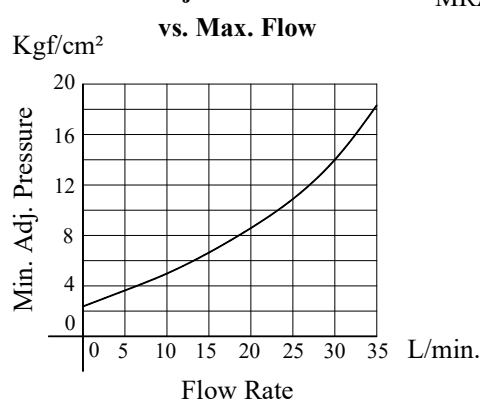
## Typical Performance Characteristics

Hydraulic Fluid: Viscosity 35cSt, Specific Gravity 0.850

### Pressure Drop

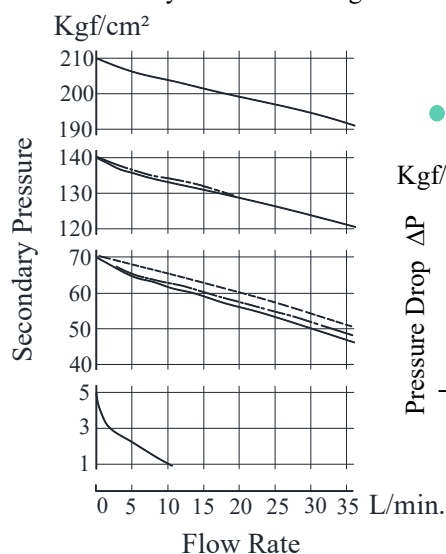


### Min. Adjustment Pressure

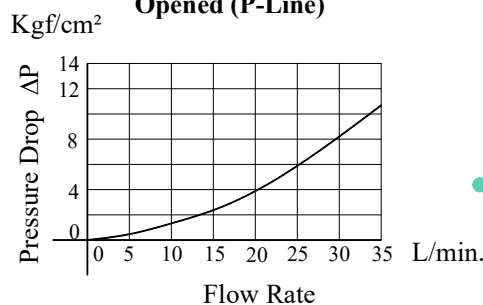


### Nominal Override Characteristics

Primary Pressure 250 Kgf/cm<sup>2</sup>



### Pres. Drop at Spool Fully Opened (P-Line)

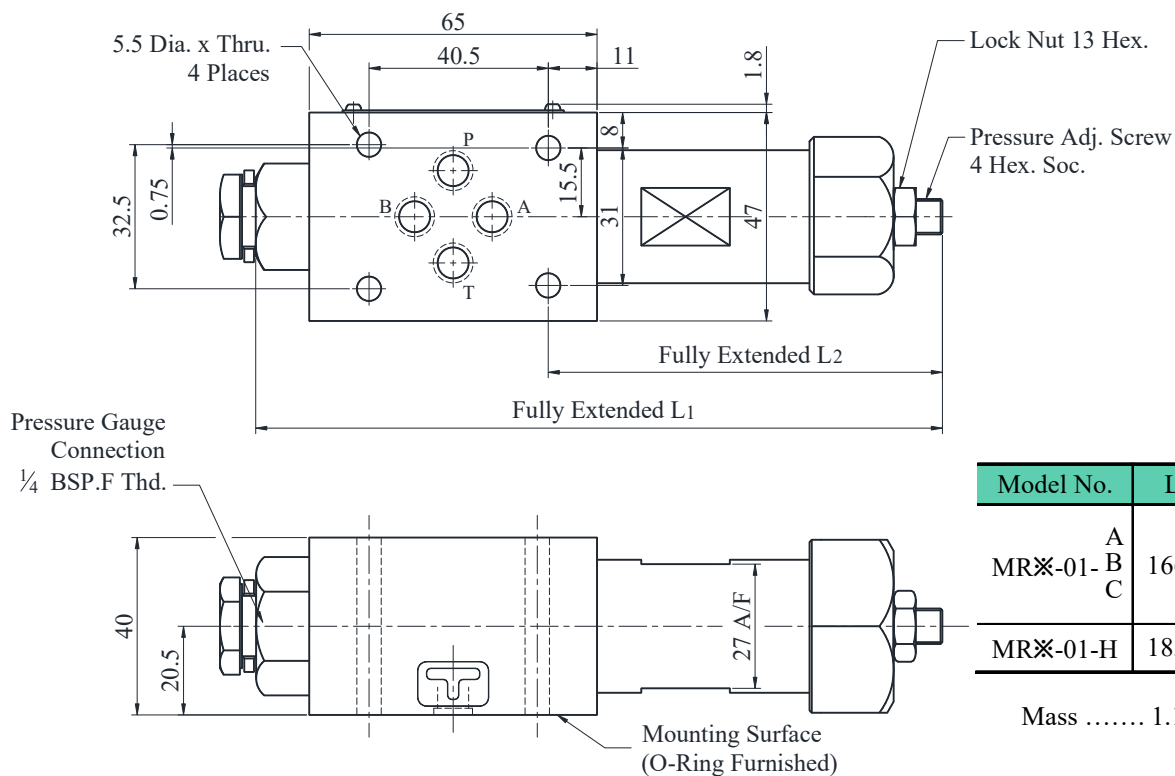


## Instructions

- Minimum Adjustment Pressure varies according to the back pressure at tank line. Therefore, please obtain it from the following formula.  
Min. Adjustment Pressure = Value obtained from minimum adjustment pressure characteristics curve and back pressure at tank line.
- The back pressure at the tank line should be obtained by adding the tank line pressure drop for each valve to be stacked.
- To make pressure adjustment, loosen the lock nut and turn the pressure adjustment screw clockwise or anticlockwise.
- For an increase of pressure, turn the screw clockwise. Be sure to re-tighten the lock nut firmly after making adjustment to the pressure.

- **MRP-01-※-30H16**
- **MRA-01-※-30H16**
- **MRB-01-※-30H16**

**DIMENSIONS IN  
MILLIMETRES**



Model No.	L <sub>1</sub>	L <sub>2</sub>
MR※-01- A B C	166.2	92
MR※-01-H	183.2	109

Mass ..... 1.1Kg.

## Spare Parts List

### List of Seals

Sl. No.	Name of Parts	Parts Numbers	Qty.
			MR※-01
1	O-Ring	SO-NB-P9	4
2	O-Ring	SO-NB-P18	2
3	O-Ring	SO-NA-P20	1

Note: When ordering the seals, please specify the seal kit number from the table below.

### List of Seal Kit

Model Numbers	Seal Kit Number
MRP-01	KS-MBP-01-30
MRA-01	
MRB-01	