

YRF Series Spin-on Return Line Filters

These filters are used to improve the reliability of a lube or hydraulic system to eliminate failure due to contamination.

Features

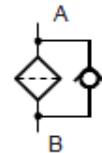
- Sub-plate mounting type return line filter.
- Paper element filtration media.
- Spin on disposable canisters.
- P Suitable for petroleum and mineral based oils.
- In built by-pass valve.

Specifications

Model Number	Max. Working pressure kgf/cm ²	Flow handling capacity l/min	Mass kg(Approx)
YRF-P-16-M-25-**-10	7	40 (Nominal)	1.2



Graphical symbol

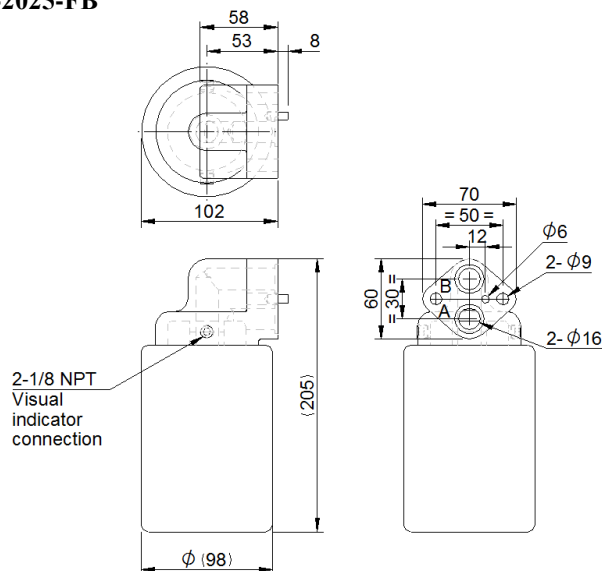


Model Number Designation

YRF	- P	- 16	- M	- 25	- VI	- 10
Series Number	Element Media	Prot Size (mm)	Mounting Type	Filtration Rating	Clogging Indicator	Design Number
YRF: Return Line Filter	P : Paper	16 : Ø16	M : Sub-Plate Mounting	25 : 25µm	VI : Visual clogging indicator * None : Without visual clogging indicator	10

* Visual clogging indicator model: VI-2025-FB

YRF-P-16-M-25-*-10



Dimensions in Millimeters

Ordering Information

Example: spin-on return line filter with paper media having port size of 16mm, sub plate mounting type , filtration rating of 25µm with visual clog indicator : **YRF-P-16-M-25-VI-10**, Material code : **88000000729**.

Sl.No	Model code	Material Number
1	YRF-P-16-M-25-VI-10	88000000729
2	YRF-P-16-M-25-10	88000000730

Spin on Canister

These are used to improve the reliability of a lube or hydraulic system to eliminate failure due to contamination. And these are consists of a filter bowl, filter element, threaded mounting plate with bypass check valve. Generally the flow direction of oil is from out side to inside of filter element.

Features

- Disposable spin on element.
- By-pass setting—1.7 kgf/cm²

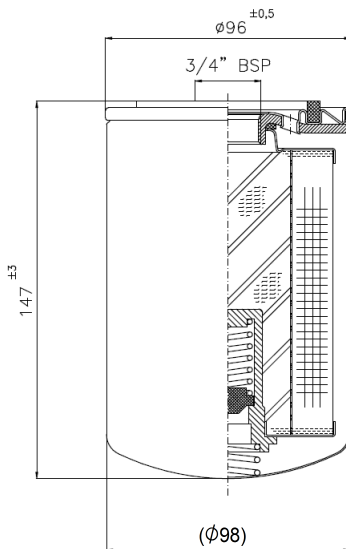
Model Number Designation

YRFE	-P	-6	C25
Series Number	Element Media	Port Size	Filtration Rating
YRFE : Spin on canister	P : Paper	06 : G3/4"	C25 : 25 µm



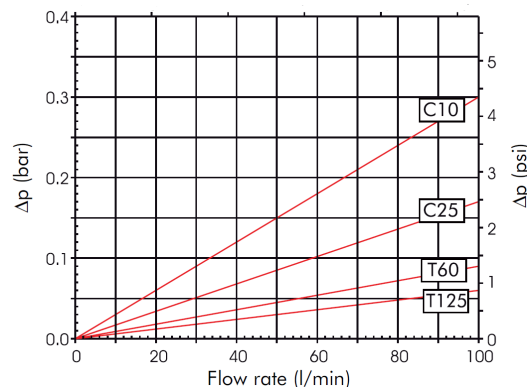
Dimensions

Dimensions in Millimeters



Pressure drop through clean filter element

The pressure drop of spin on canister is based on both the internal diameter of the canister and to the filter media and this value is affected by the oil viscosity. Example: when the Δp value from the curve is 0.3 bar and oil of 46 cSt grade is used the corresponding value is 0.46(0.3x46/30)bar.



Instructions

These canister should be replaced when the differential set pressure on the maintenance indicator is reached, if the canister does not have the clogging indicator, exchange the spin on canister at least every 5 months or of 850 hours of operation .

Replacing the spin on canister : switched off the system before unscrewing the canister & make sure that there is no pressure in the spin on filter.

Ordering Information

Example : Spin-on canister with paper media having port size of G3/4", filtration rating of 25µm.

: YRFE-P-06-C25, Material code : 88000000731

Sl.No	Model code	Material Number
1	YRFE-P-06-C25	88000000731

For further information contact us

YUKEN INDIA LTD.

P. B. No. 5, Koppalthimmanahalli Village,
H. Hosakote Gram Panchayat, Lakkur Hobli,
Malur Taluk, Kolar District- 563130, Karnataka

Email: marketing@yukenindia.com

Website: www.yukenindia.com

YRF Series Spin-on Return Line Filters